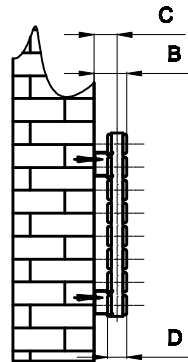
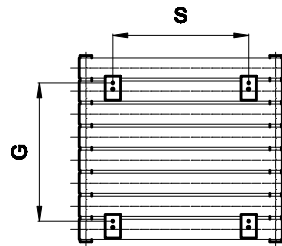


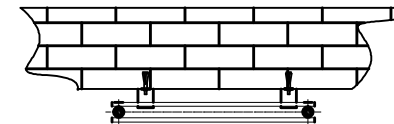
Front View



Side View



Back View



Top view

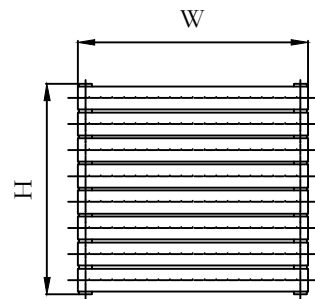
SUPPLIED INSTALLATION ACCESSORIES

— X4 — X8 ○ X2

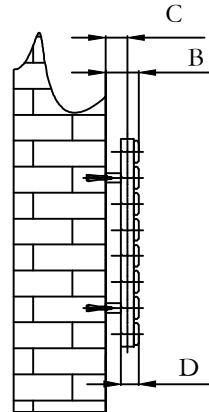
⏏ X4 ● X1 ○ X1

- Vertical Mounting
- Optional Color Selection
- Max Operational Pressure:6Bar
- Inlet/Outlet:1/2"Female Pipe Thread
- All Dimensions are in mm

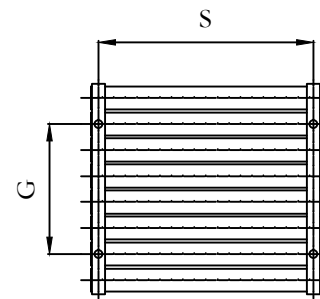
Product Code	Product Name	pipe number	Height	Width	Thickndas	hanger Axes Horizontal	Wall to front face of the brackct	hanger Axes vertical	Wall to pipe center distance	Empty Weight	Water volume
			H mm	W mm	D mm	S mm	B mm	G mm	C mm	- kg	- l
RND-RNE400D	RIONE 400X550 DOUBLE	8	550	400	58	200	97	408	68	12.6	4.10
RND-RNE600D	RIONE 600X550 DOUBLE	8	550	600	58	400	97	408	68	17.5	5.75
RND-RNE800D	RIONE 800X550 DOUBLE	8	550	800	58	600	97	408	68	22.6	7.39
RND-RNE1000D	RIONE1000X550DOUBLE	8	550	1000	58	800	97	408	68	27.5	9.03
RND-RNE1200D	RIONE1200X550DOUBLE	8	550	1200	58	1000	97	408	68	32.5	10.67
RND-RNE1400D	RIONE1400X550DOUBLE	8	550	1400	58	1200	97	408	68	40.0	12.40



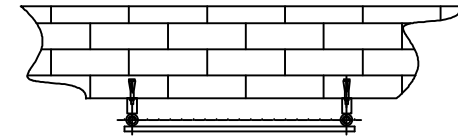
Front View



Side View



Back View



Top view

SUPPLIED INSTALLATION ACCESSORIES

- X4 — X8 ● X2
- X4 ● X1 ● X1

- Vertical Mounting
- Optional Ral Color Selection
- Max Operational Pressure:6Bar
- Inlet/Outlet:1/2"Female Pipe Thread
- All Dimensions are in mm

Product Code	Product Name	pipe number	Height	Width	Thickndss	hanger Axes Horizontal	Wall to front face of the brackct	hanger Axes vertical	Wall to pipe center distance	Empty Weight	Water volume
			H	W	D	S	B	G	C	-	-
			mm	mm	mm	mm	mm	mm	mm	mm	kg
RND-RNE400	RIONE 400X550	8	550	400	46	355	96	350	67	7.5	2.46
RND-RNE600	RIONE 600X550	8	550	600	46	555	96	350	67	10	3.28
RND-RNE800	RIONE 800X550	8	550	800	46	755	96	350	67	12.5	4.10
RND-RNE1000	RIONE 1000X550	8	550	1000	46	955	96	350	67	14.8	4.92
RND-RNE1200	RIONE 1200X550	8	550	1200	46	1155	96	350	67	17.5	5.75
RND-RNE1400	RIONE 1400X550	8	550	1400	46	1355	96	350	67	23.0	6.70