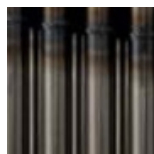
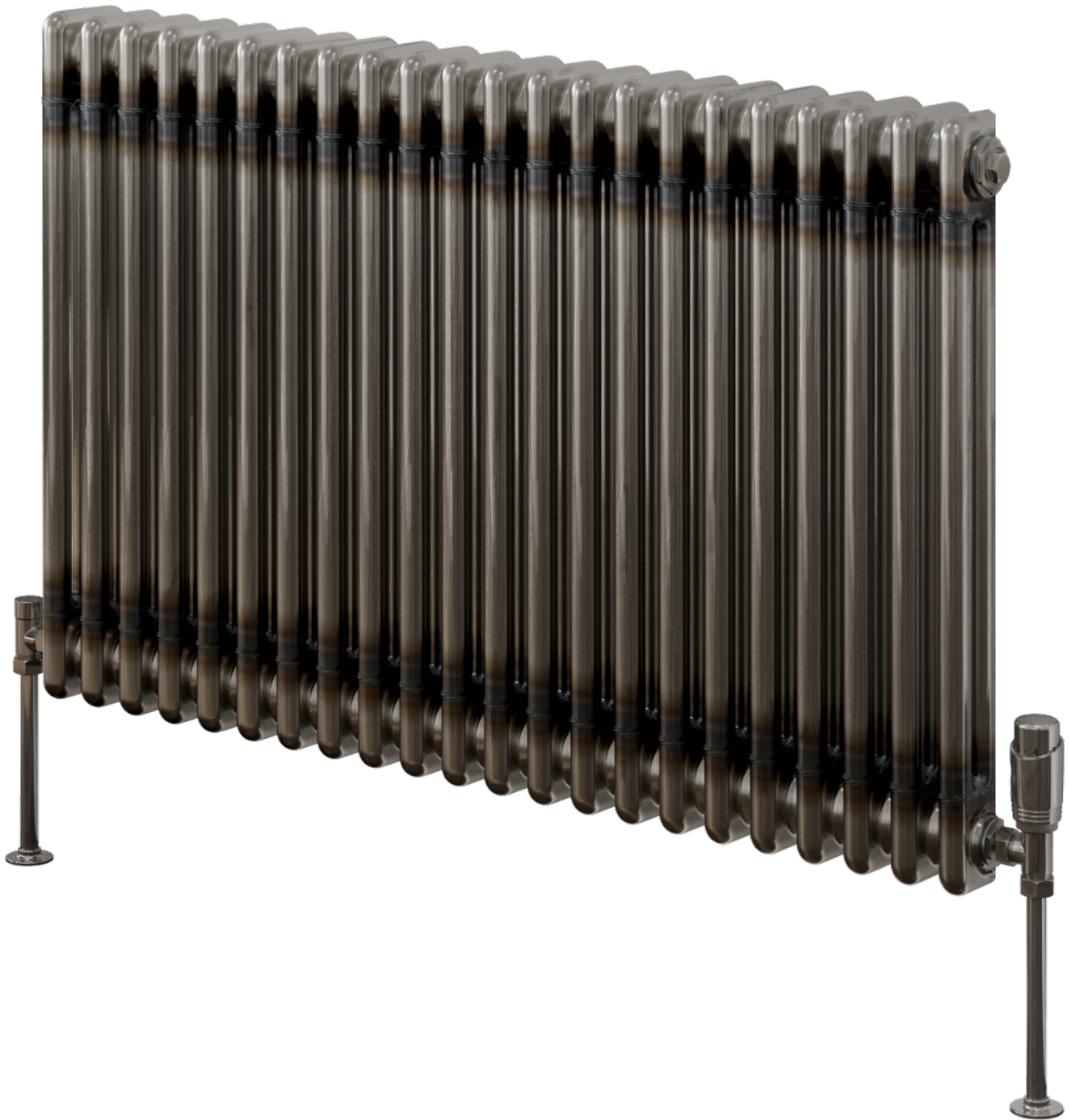


# COLONA HORIZONTAL RAW STEEL LACQUER

**REINA**  
DESIGNER RADIATOR

Column Radiator



raw steel  
lacquer

**REINA**  
DESIGNER RADIATOR



# COLONA HORIZONTAL RAW STEEL REINA LACQUER

REINA  
DESIGNER RADIATOR

Column Radiator



5 Years Guarantee



Material: Mild Steel



# COLONA HORIZONTAL RAW STEEL LACQUER

**REINA**  
DESIGNER RADIATOR

---

Column Radiator

Available Sizes

600 x 605    600 x 785    600 x 1010    600 x 1190

Available Colours



raw steel  
lacquer

# COLONA HORIZONTAL RAW STEEL REINA LACQUER

**REINA**  
DESIGNER RADIATOR

## Column Radiator

### Dimensions & Technical Data

Height (mm)	Width (mm)	Pipe Centres (mm)	Wall to Pipe Centres (mm)	Wall Distance (mm)	Dry Weight	No. Bars	Fuel Type
600	605	605	60	95	-	13	C/E/D
600	785	785	60	95	-	17	C/E/D
600	1010	1010	60	95	-	22	C/E/D
600	1190	1190	60	95	-	26	C/E/D

For pipe centre measurement including valves, add 90mm

C: Central Heating / E: Electric / D: Dual Fuel

# COLONA HORIZONTAL RAW STEEL LACQUER



## Column Radiator

### Central Heating Heat Outputs

Model/SKU	Height (mm)	Width (mm)	Colour	Heat Outputs $\Delta T50^{\circ}\text{C}$		Heat Outputs $\Delta T60^{\circ}\text{C}$	
				BTU	Watts	BTU	Watts
2/C613L	600	605	● Raw Steel Lacquer	1935	567	2477	726
3/C613L	600	605	● Raw Steel Lacquer	2648	777	3390	994
2/C617L	600	785	● Raw Steel Lacquer	2530	742	3239	950
3/C617L	600	785	● Raw Steel Lacquer	3450	1012	4416	1295
2/C622L	600	1010	● Raw Steel Lacquer	3273	960	4190	1229
3/C622L	600	1010	● Raw Steel Lacquer	4465	1309	5715	1676
2/C626L	600	1190	● Raw Steel Lacquer	3870	1135	4953	1452
3/C626L	600	1190	● Raw Steel Lacquer	5277	1548	6755	1981