

# BRENO

Mild Steel Towel Rail

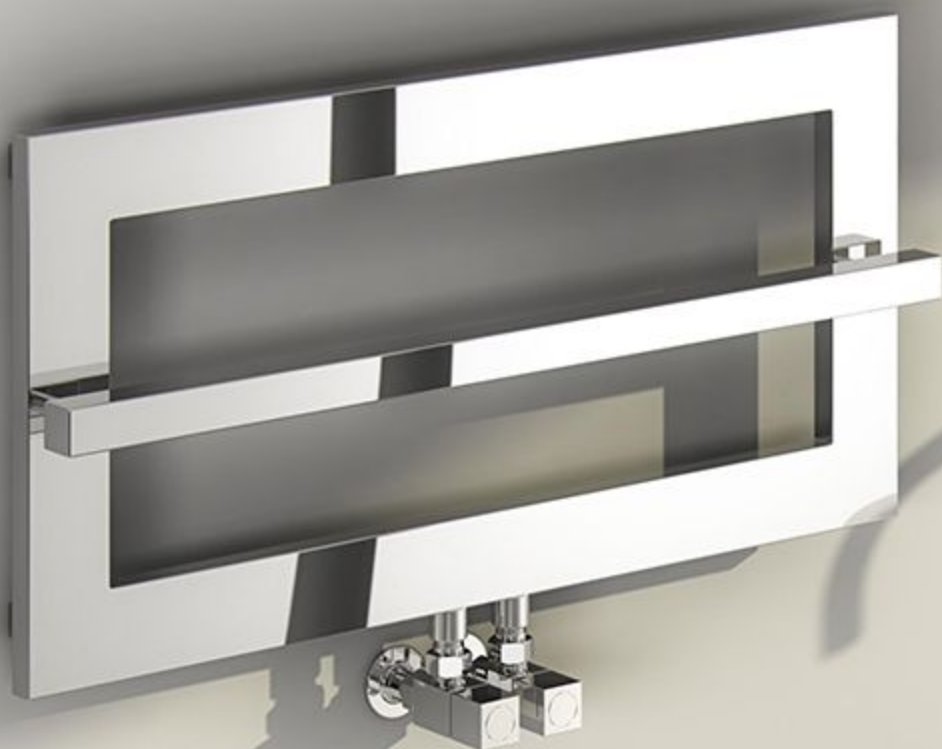


**REINA**  
DESIGNER RADIATOR



chrome

**REINA**  
DESIGNER RADIATOR



# BRENO

Mild Steel Towel Rail



**REINA**  
DESIGNER RADIATOR

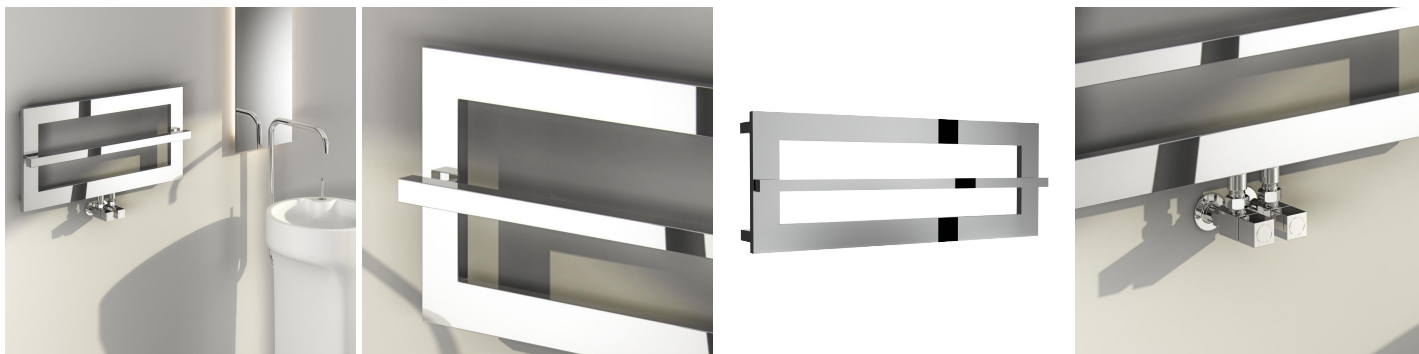


5 Years Guarantee



Material: Mild Steel

The Breno Towel Radiator combines modern elegance with everyday practicality. Finished in sleek chrome, it delivers excellent heat output while adding a touch of sophistication to any bathroom. Crafted from durable steel for long-lasting performance, it comes with a 5-year guarantee, ensuring both style and reliability.



# BRENO

Mild Steel Towel Rail



**REINA**  
DESIGNER RADIATOR

---

## Available Sizes



350 x 700

## Available Colours



chrome




Dimensions & Technical Data

Height (mm)	Width (mm)	Pipe Centres (mm)	Wall to Pipe Centres (mm)	Wall Distance (mm)	Dry Weight	No. Bars	Fuel Type
350	700	50	60-70	70-80	-		C

C: Central Heating / E: Electric / D: Dual Fuel



Central Heating Heat Outputs

Model/SKU	Height (mm)	Width (mm)	Colour	Heat Outputs $\Delta T50^{\circ}\text{C}$		Heat Outputs $\Delta T60^{\circ}\text{C}$	
				BTU	Watts	BTU	Watts
RND-BO1	350	700	 Chrome	513	151	657	193